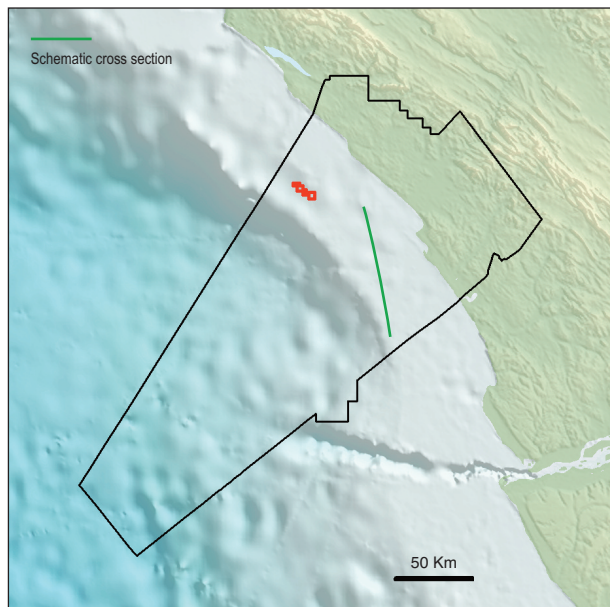
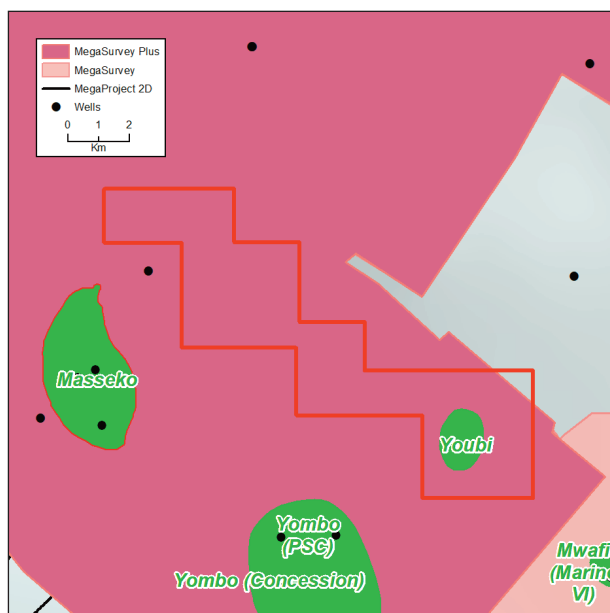


# Permis Youbi



Congo Coastal Basin



Seismic available, Permis Youbi

Permis Youbi is located offshore in the Congo Coastal Basin. It has an area of 46.6 Km<sup>2</sup>. The bathymetry of this shallow-water block ranges from 100-200 m.

Permis Youbi contains one oil discovery well, Youbi Marine-1 tested 17° API oil within the Albian Sendji Formation (Fm). Typical plays expected in Permis Youbi include Cenomanian sandstones, Sendji carbonates and Pre-salt sandstones.

### Cenomanian Sandstones

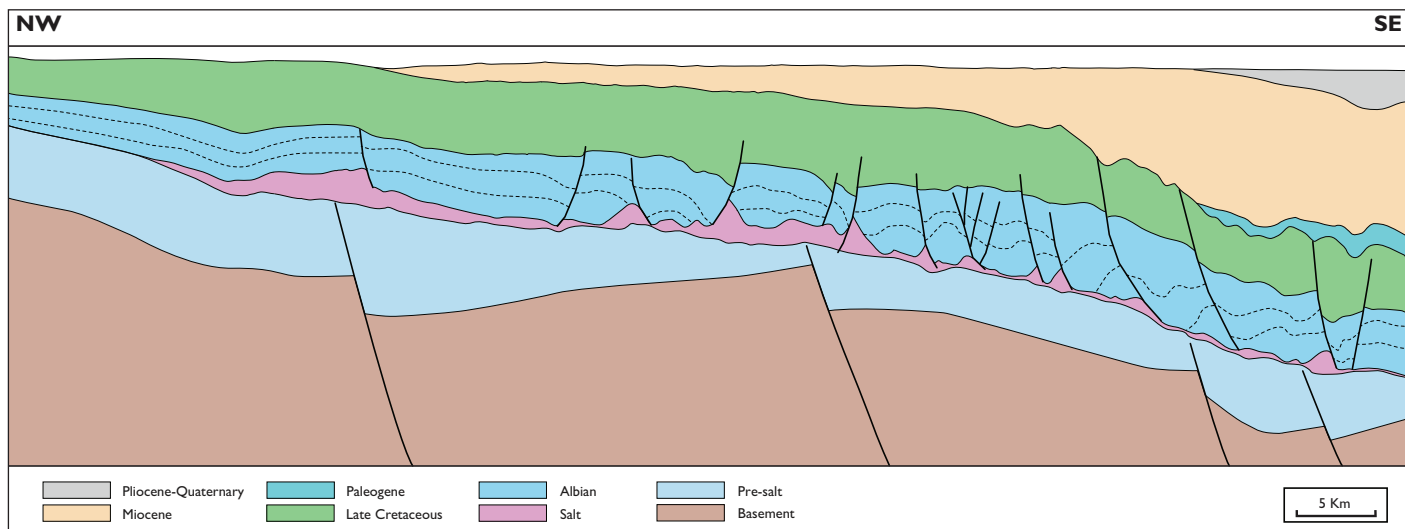
The Cenomanian Tchala Sandstone Fm is a secondary reservoir for the Loango Field to the southeast of the block. Hydrocarbons are sourced from the Neocomian Noires Fm. Trapping structures are typically related to salt-induced rollover anticlines.

### Sendji Carbonates

The Albian Sendji Fm is the primary reservoir for the nearby Yombo and Masseko fields. Hydrocarbons are sourced from the Neocomian Noires Fm (predominantly sourced from Type I/II kerogens). Trapping structures are typically related to salt withdrawal turtle-back features and roll-over anticlines.

### Pre-salt Sandstones

Pre-salt reservoirs include the Chela, Djeno and Vandji formations. The nearby Vandji Marine Field encountered hydrocarbons in sandstone reservoirs within the Pre-salt Chela and Lucula formations.



Schematic cross section