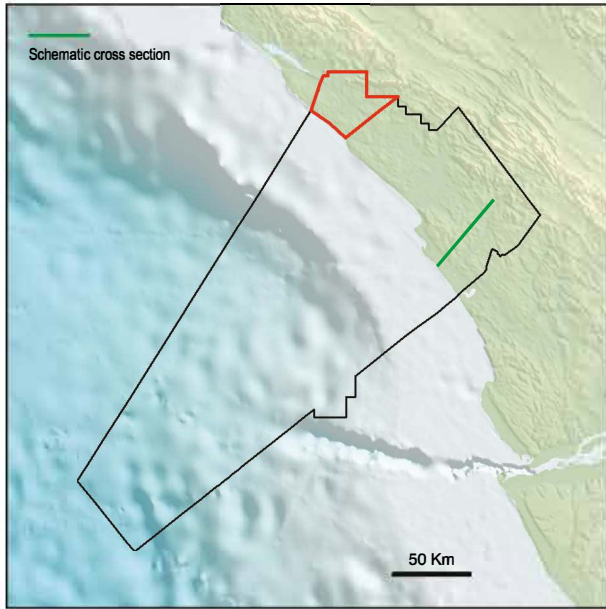
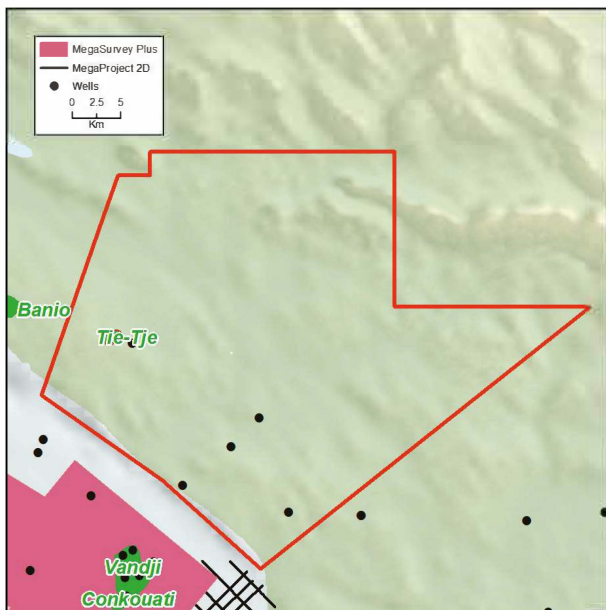


Permis Niambi



Congo Coastal Basin



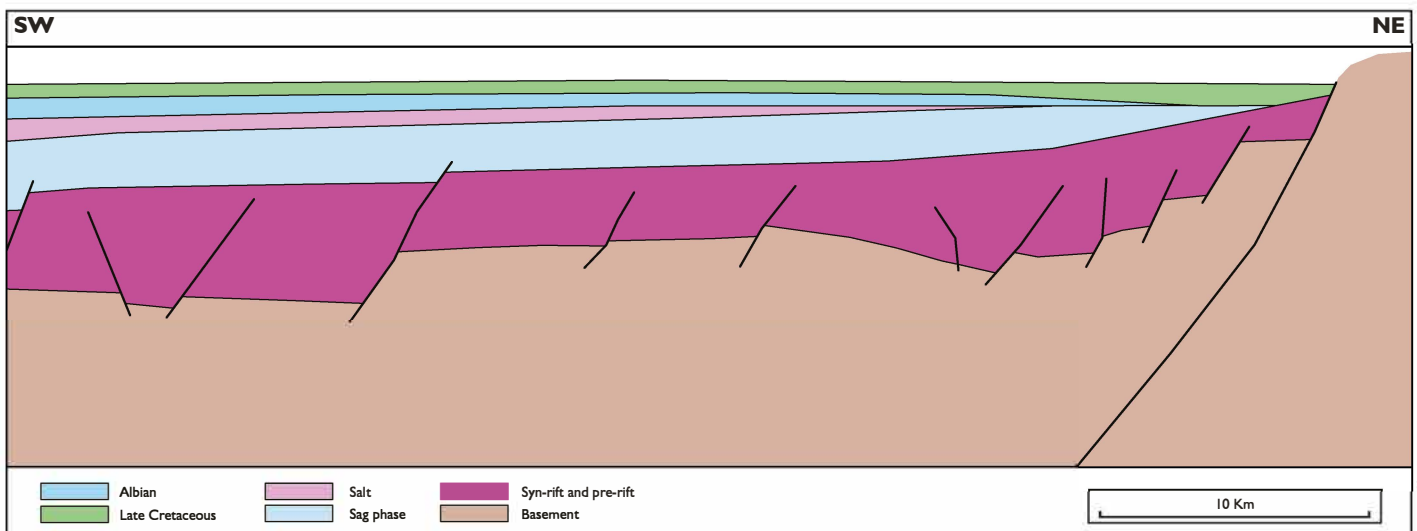
Seismic available, Permis Niambi

Permis Niambi is located onshore in the Congo Coastal Basin. It has an area of 1295.6 Km². Typical plays expected in Permis Niambi include Pre-salt sandstones and carbonates.

The main source rocks expected in the onshore part of the Congo Coastal Basin are the Pre-salt syn-rift Bucomazi Formation (Fm) shales and equivalents. These are the most prolific source rocks along the West African margin.

Pre-salt reservoirs include sandstones of the Chela, Djeno, Mengo and Vandji formations and carbonates of the Toca Fm equivalent. The nearby Banio Field (onshore Gabon) encountered hydrocarbons within Pre-salt Toca Fm equivalent carbonates. The offshore Vandji Marine Field encountered hydrocarbons within sandstones of the Pre-salt Chela and Lucula formations.

Tilted fault blocks are expected to provide the main trapping mechanism within this block. The Vandji and Mengo formations sandstones may pinch-out within shale facies in syn-rift intervals or in combination with tilted fault blocks using faults as seals. There is also potential for encountering stacked reservoir targets within these tilted fault blocks.



Schematic cross section